



YOUR  
NEW LIFE  
IN SPAIN





**GEOSEM S.L.**

Calle Patricio Pérez, 21, 03181 · Torrevieja · Alicante · SPAIN  
www.geosem.es · info@geosem.es · +34 966 70 79 34

*Las infografías este folleto promocional son recreaciones artísticas y no comprometen contractualmente. El diseño final puede estar sujeto a modificaciones.  
The infographics of this promotional brochure are artistic recreations and do not compromise contractually. The final design may be subject to change.*



Building Quality  
Since 1.990





# Las Colinas Golf & Country Club

In Campoamor, to the south of Alicante, there is a place which is different: Las Colinas Golf & Country Club.

A 330-hectare valley between hills, near the sea, With a championship golf course running through it. An eco-friendly development with low housing intensity, which blends into the surroundings. The ideal place to escape to and enjoy 200,000 sq. metres of beautiful countryside and scenic walks through indigenous flora, and orange and lemon groves.

## Environment and golf

Las Colinas Golf & Country Club is a development which blends into and respects the natural surroundings and the environment.

The project design includes a sustainable development and environment protection measures plan drawn up by Valencia Universidad Politécnica. This plan controls noise and light pollution and promotes landscaping with native trees and plants. Moreover, 200,000 sq. metres of natural areas, with walks through indigenous vegetation, have been preserved.

The golf course extends across the valley between the hills, adapts to the unusual lie of the land and blends naturally into the landscape.

The width of its fairways, the design of its extensive undulating greens, and the numerous tees at each hole give it great versatility and mean that it is suitable for professional competitions, while also offering any player a pleasant, enjoyable and affordable game.

## Getting there



### By Air

Close to two international airports

- Alicante Int. Airport (50 minutes away)
- San Javier Airport (20 minutes away)



### By Road

Highway connection with:

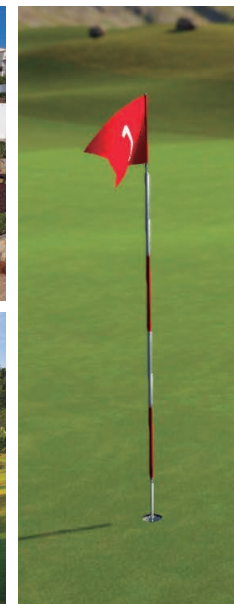
- Alicante 74 Km.
- Murcia 63 Km.
- Madrid 400 Km.
- Barcelona 600 Km.



### By Train

High Speed train AVE Talgo/Altaria train.

- AVE Alicante Station 74 km away.
- Balsicas Station 30 Km away (Talgo/Altaria)



## Our projects in Las Colinas Golf & Country Club

We are currently developing the following projects

- 1 Madroño Community.
- 2 Villas by Geosem.
- 3 Naranjos Community.
- 4 Madreselva Community.



# Madroño

Community






# Madroño

Community



  
MADROÑO  
MEDITERRANEAN VILLAS

9 Villas  
Close to the  
Golf Course  
with panoramic  
Sea views



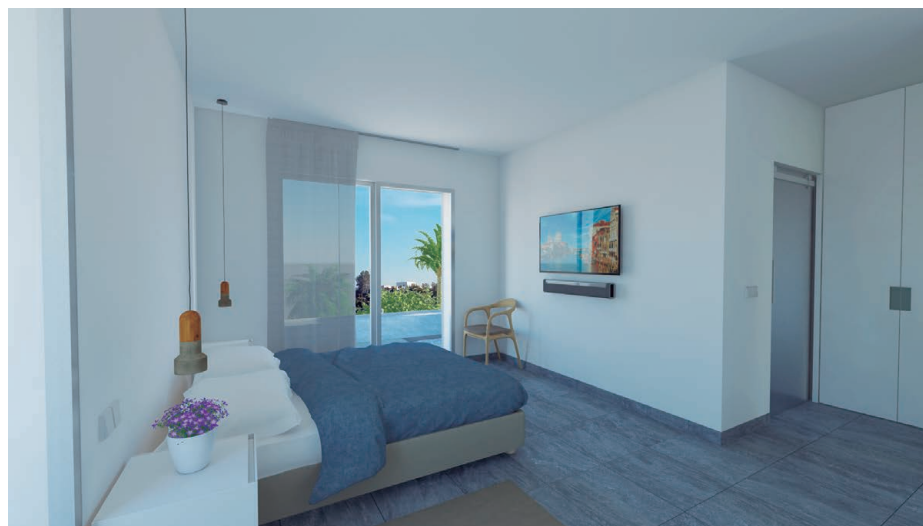
# Madroño

Community



# Madroño

Community



# Madroño

## Community

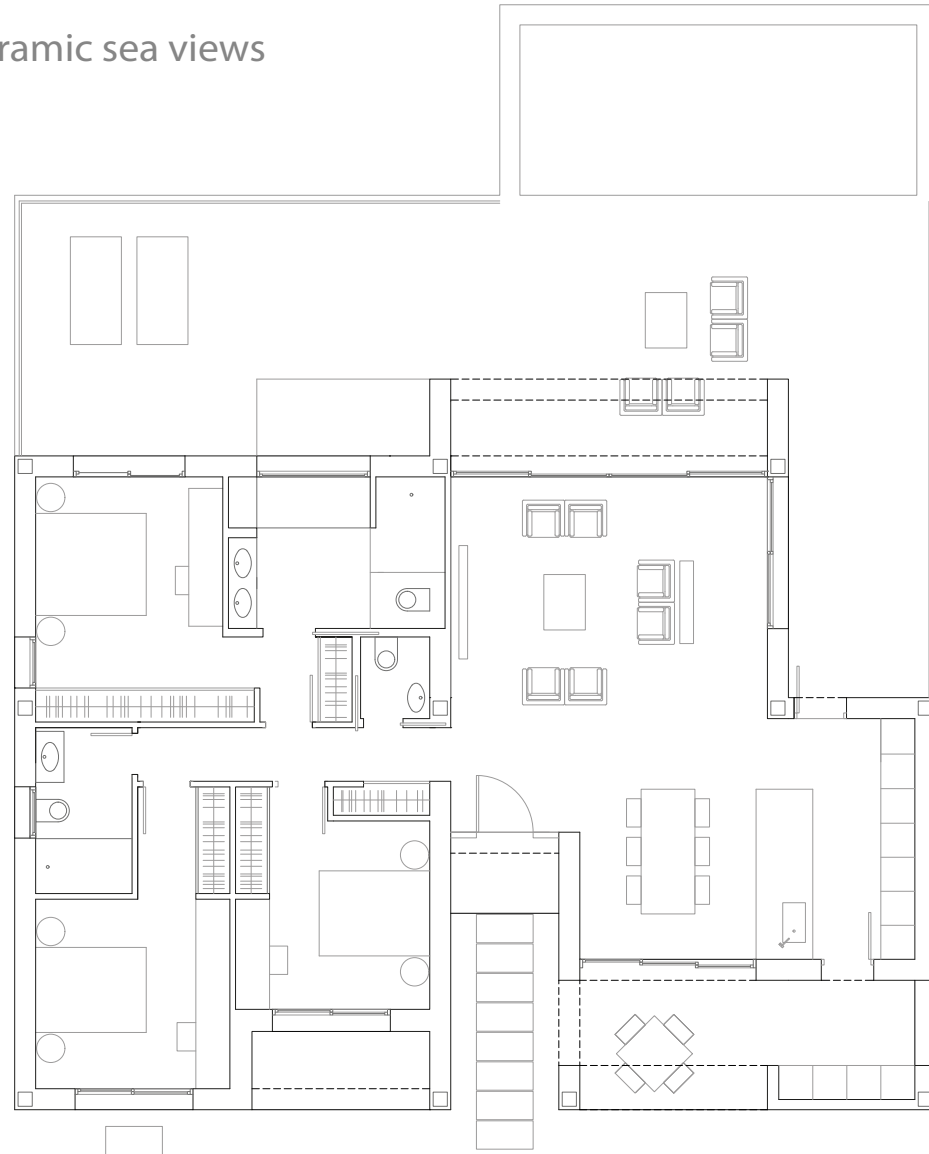


9 independent villas with golf and panoramic sea views

### Blanca Paloma.

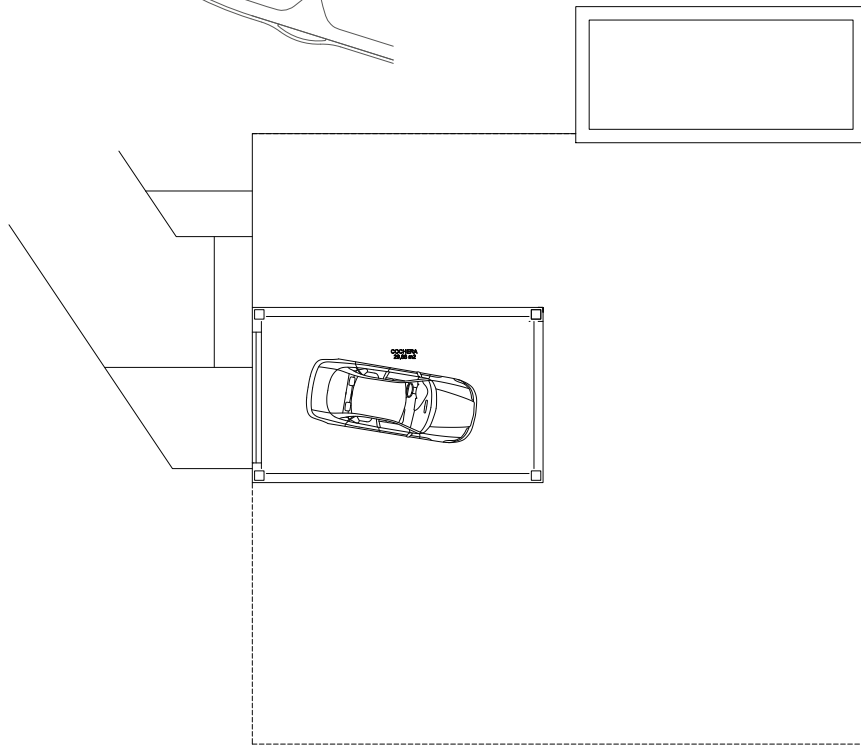
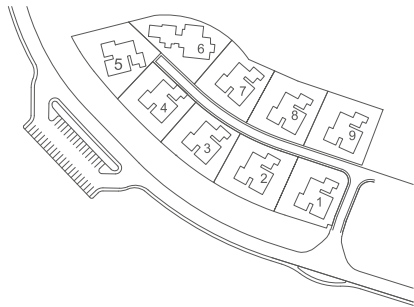
Villas on one level.

Ground floor: 147,39 m<sup>2</sup>  
Basement: 35,63 m<sup>2</sup>  
Pool: 21,00 m<sup>2</sup>

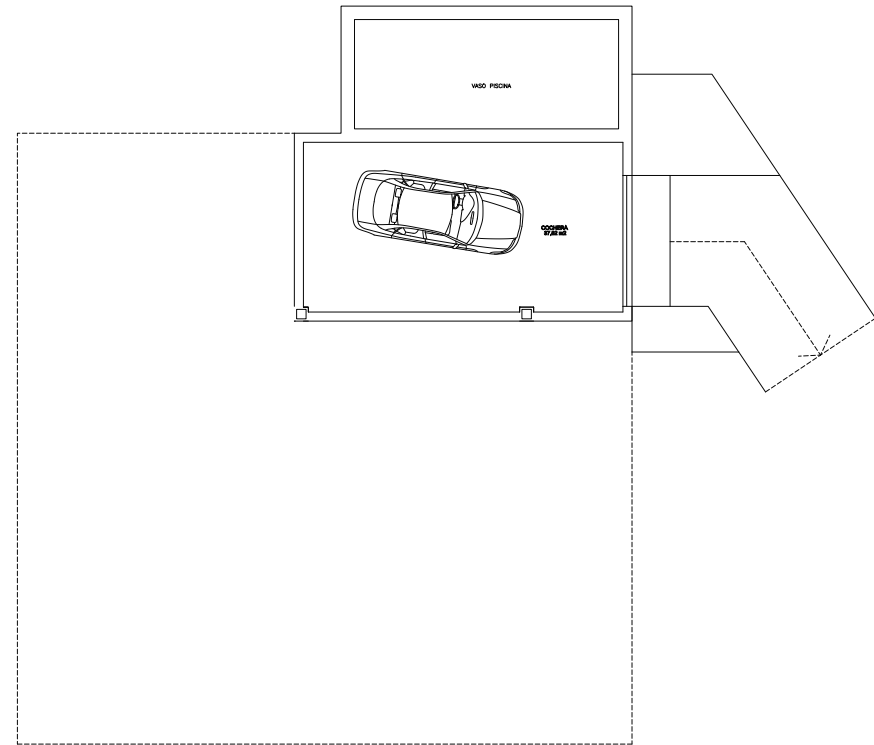


# Madroño

Community



Basement villas 1, 2, 3 and 4



Basement villas 7, 8 and 9

# Quality & Efficiency



**SIEMENS**



**SCHÜCO**

**■ GEBERIT**

PORCELANOSA

**bticino**

**JUNG**

**■ GRIESSER**

**blum**  
Perfecting motion

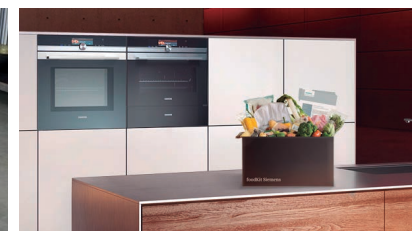
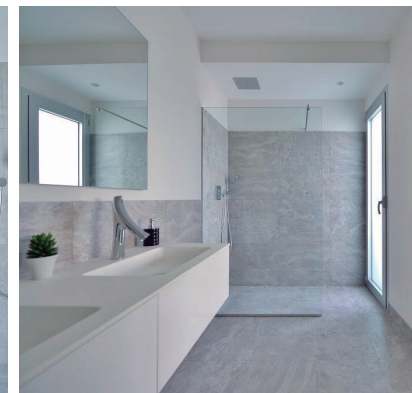
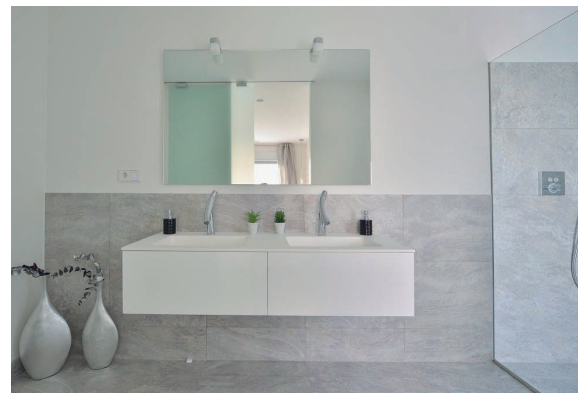
**Dopo**  
lighting

**ASTRALPOOL**

**SCHLÜTER**  
SYSTEMS

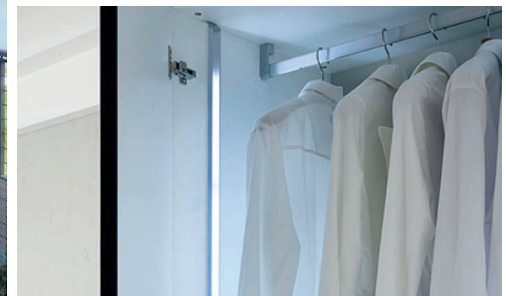
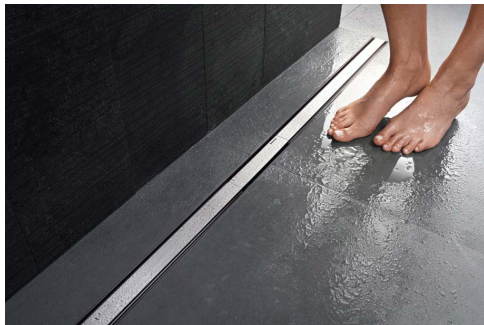
**ARKOS LIGHT**

**hansgrohe**  
AXOR | PHARO



# Madroño

Community



# Madreselva

Community





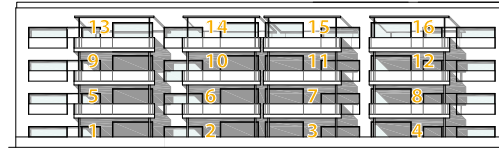
# Madreselva

Community

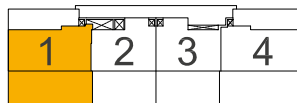
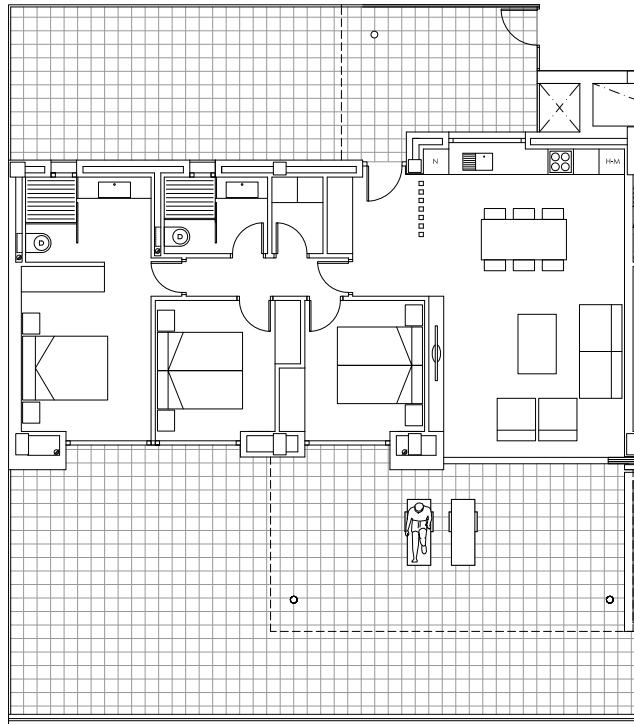


# Madreselva

## Community

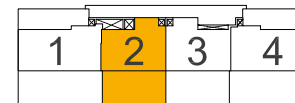
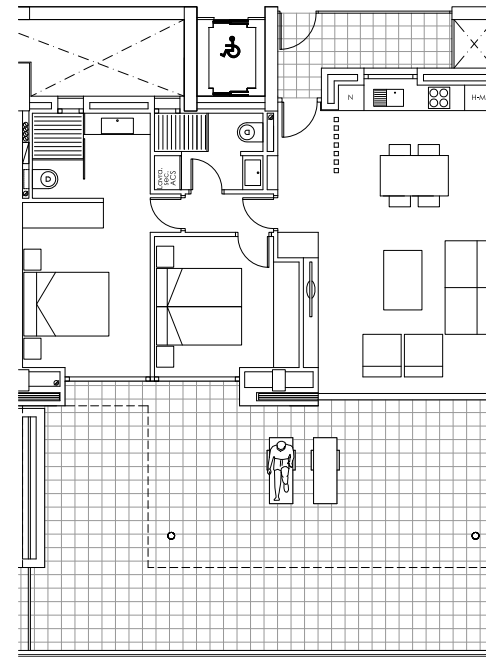


Apartment nº 1. Ground floor.



Built surface: 140,93 m<sup>2</sup>  
 Covered terrace: 48,19 m<sup>2</sup>  
 Terrace: 82,59 m<sup>2</sup>  
 Total: 271,71 m<sup>2</sup>

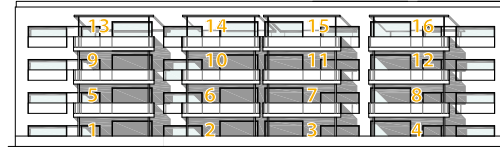
Apartment nº 2. Ground floor.



Built surface: 139,54 m<sup>2</sup>  
 Covered terrace: 39,50 m<sup>2</sup>  
 Terrace: 30,96 m<sup>2</sup>  
 Total: 210,00 m<sup>2</sup>

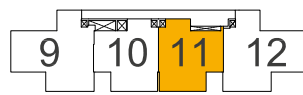
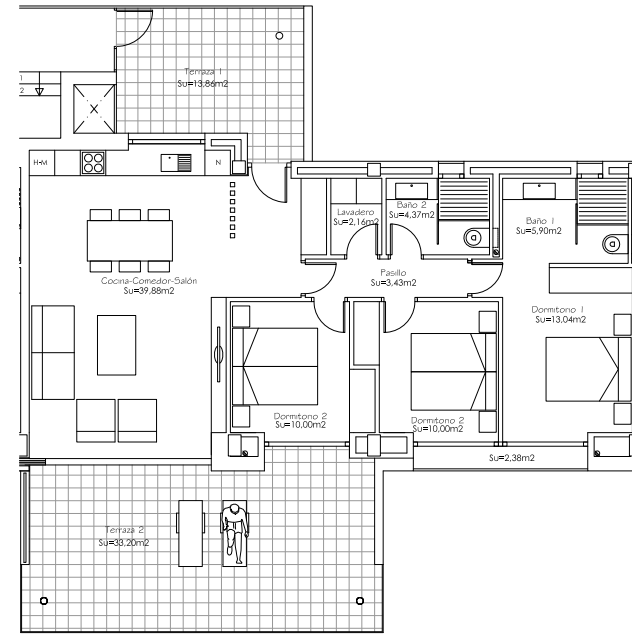
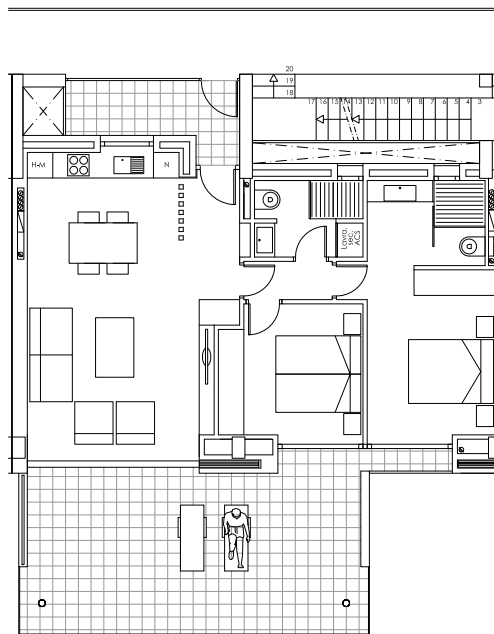
# Madreselva

## Community

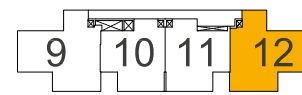


Apartment nº 11. Second floor.

Apartment nº 12. Second floor.



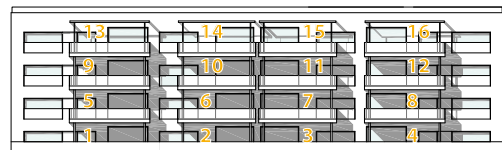
Built surface: 110,41 m<sup>2</sup>  
 Covered terrace: 39,05 m<sup>2</sup>  
 Total: 149,46 m<sup>2</sup>



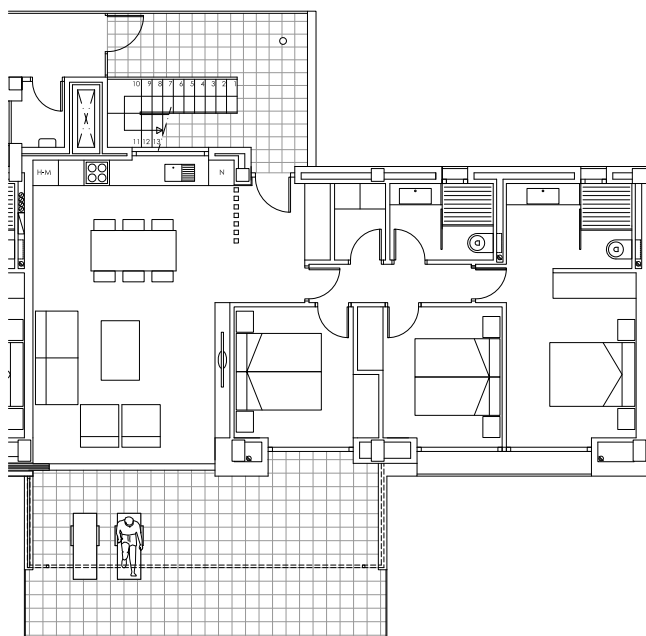
Built surface: 140,93 m<sup>2</sup>  
 Covered terrace: 39,05 m<sup>2</sup>  
 Total: 179,78 m<sup>2</sup>

# Madreselva

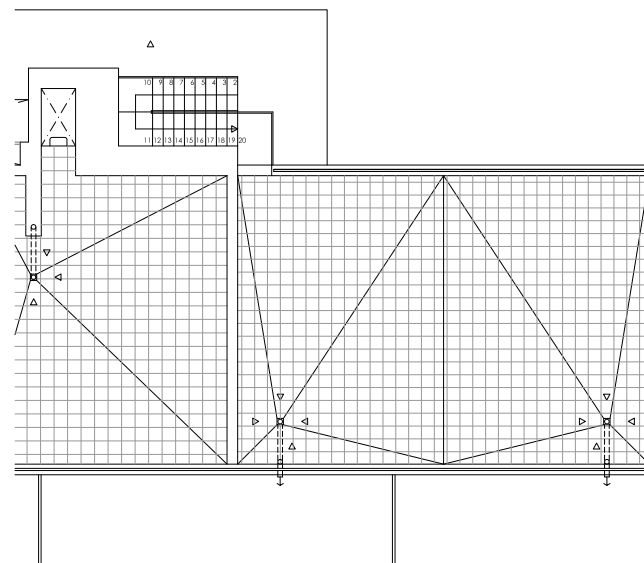
## Community



Penthouse nº 16. Main floor.



Apartment nº 16. Solarium



Built surface:	119,35 m <sup>2</sup>
Covered terrace:	14,52 m <sup>2</sup>
Terrace:	33,20 m <sup>2</sup>
Solarium:	65,63 m <sup>2</sup>
Total:	232,7 m <sup>2</sup>



Villas by Geosem

# Adelfa 15

Villas by Geosem



# Adelfa15

Villas by Geosem



# Adelfa 15

Villas by Geosem





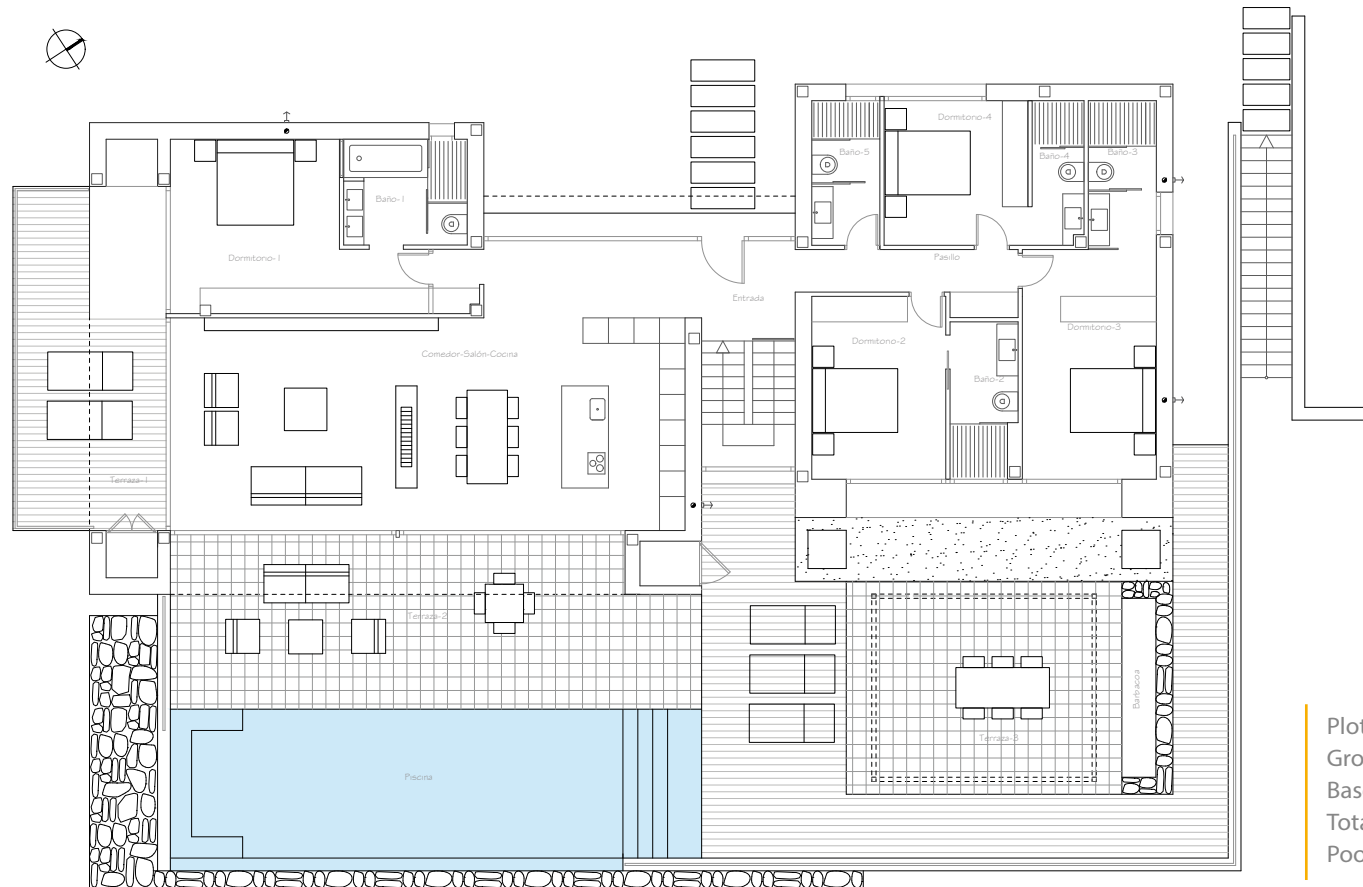
# Adelfa 15

Villas by Geosem



# Adelfa 15

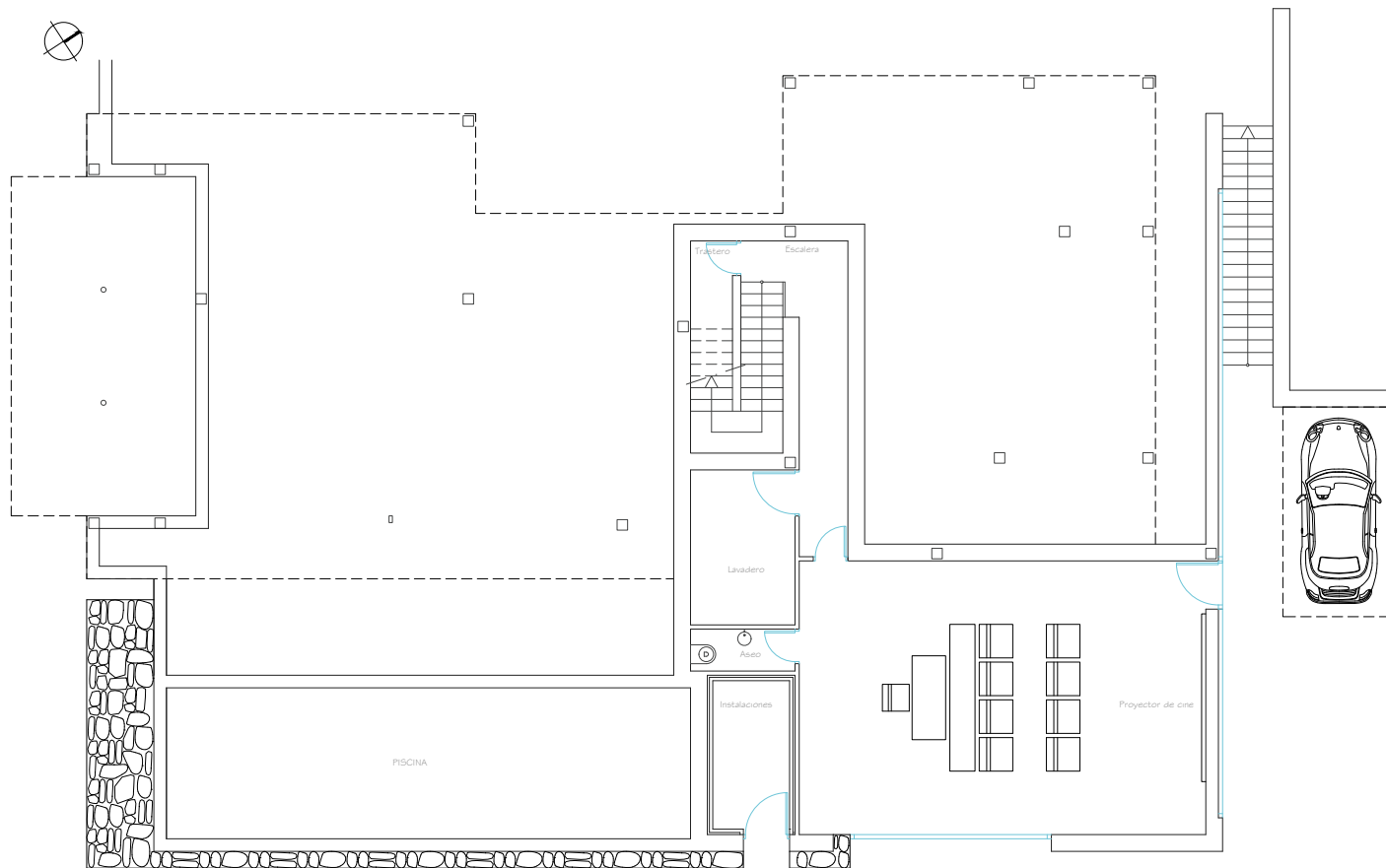
## Main floor



Plot:	1514,27 m <sup>2</sup>
Ground Floor:	180,77 m <sup>2</sup>
Basement:	102,75 m <sup>2</sup>
Total:	283,52 m <sup>2</sup>
Pool:	43,75 m <sup>2</sup>

# Adelfa 15

## Basement



# Quality

& Efficiency



**SIEMENS**



**SCHÜCO**

**GEBERIT**

PORCELANOSA

**bticino**

**JUNG**

**GRIESSER**

**blum**  
Perfecting motion

**Dopo**  
lighting

**ASTRALPOOL**

**SCHLÜTER**  
SYSTEMS

**ARKOS LIGHT**

**hansgrohe**  
AXOR | PHARO



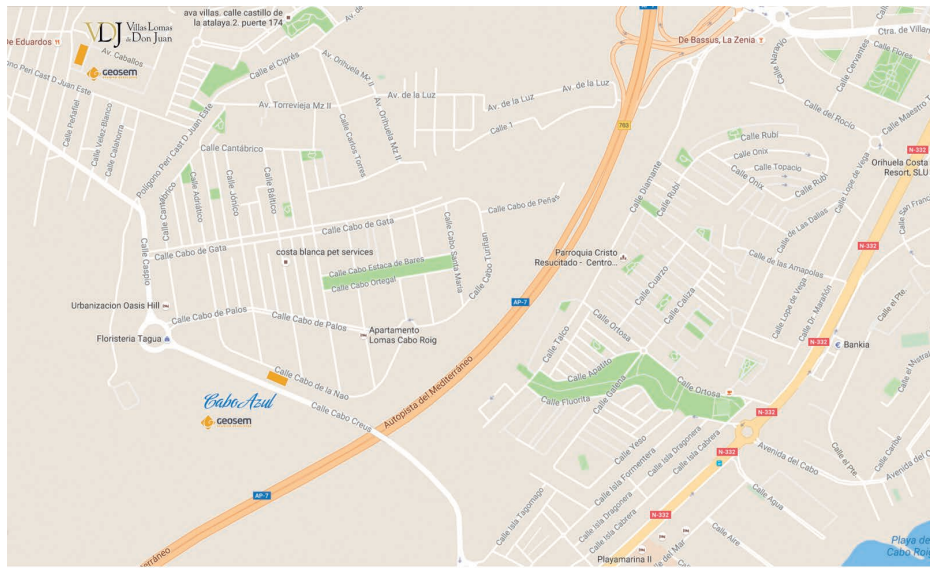
# Adelfa 15

Villas by Geosem



# Our projects Cabo Roig

## Villas and bungalows by Geosem



# Lomas de Don Juan

Villas by Geosem



Detached villas with pool, parking and garden plot.  
With top quality finishes and fully equipped.

# Cabo Azul

Bungalows



Bungalows with panoramic sea views.  
With communal pool, parking, garden and fully equipped.

# Lomas de Don Juan

Villas by Geosem





# Lomas de Don Juan

Villas by Geosem



# Lomas de Don Juan

Villas by Geosem



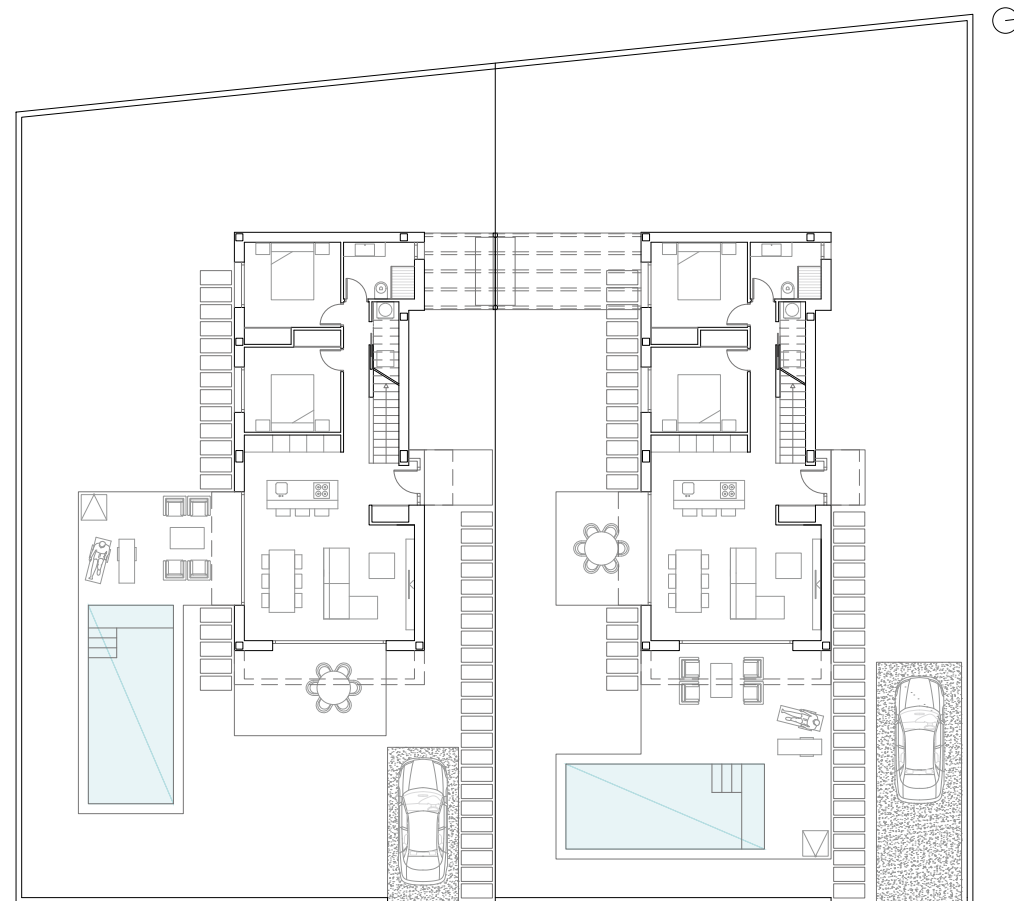
# Lomas de Don Juan

Villas by Geosem



# Lomas de Don Juan

Villas by Geosem



## Villa 1

### Main Floor

Plot:	500,00 m <sup>2</sup>
Ground floor:	95,70 m <sup>2</sup>
First Floor:	49,54 m <sup>2</sup>
Terraces:	46,20 m <sup>2</sup>
Solarium:	26,00 m <sup>2</sup>
Parking:	13,75 m <sup>2</sup>
Total:	228,19 m <sup>2</sup>
Pool:	21,00 m <sup>2</sup>

## Villa 2

### Main Floor

Plot:	500,00 m <sup>2</sup>
Ground floor:	95,70 m <sup>2</sup>
First Floor:	49,54 m <sup>2</sup>
Terraces:	53,00 m <sup>2</sup>
Solarium:	26,00 m <sup>2</sup>
Parking:	25,50 m <sup>2</sup>
Total:	249,74 m <sup>2</sup>
Pool:	21,00 m <sup>2</sup>

# Lomas de Don Juan

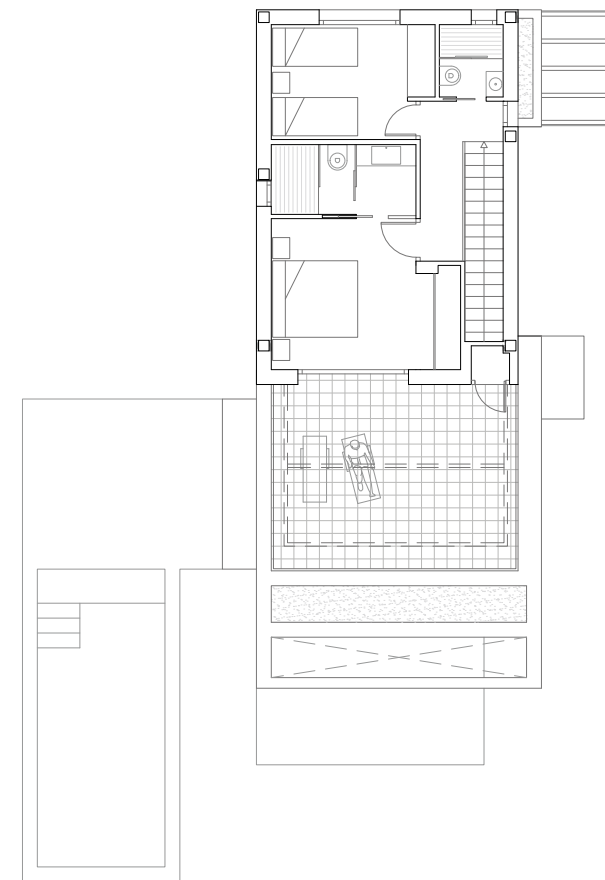
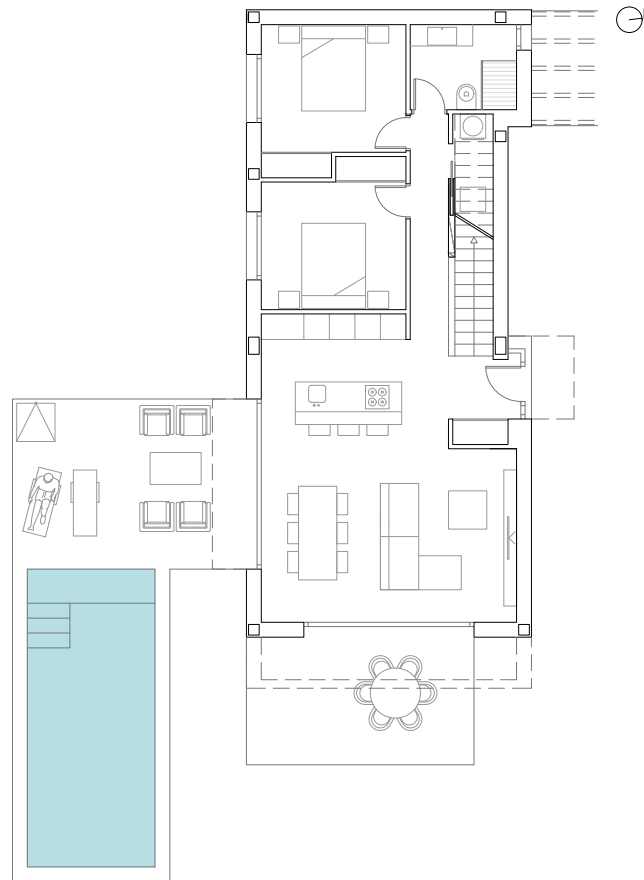
Villas by Geosem



## Villa1

### Main Floor

Plot:	500,00 m <sup>2</sup>
Ground floor:	95,70 m <sup>2</sup>
First Floor:	49,54 m <sup>2</sup>
Terraces:	46,20 m <sup>2</sup>
Solarium:	26,00 m <sup>2</sup>
Parking:	13,75 m <sup>2</sup>
Total:	231,19 m <sup>2</sup>
Pool:	21,00 m <sup>2</sup>



# Lomas de Don Juan

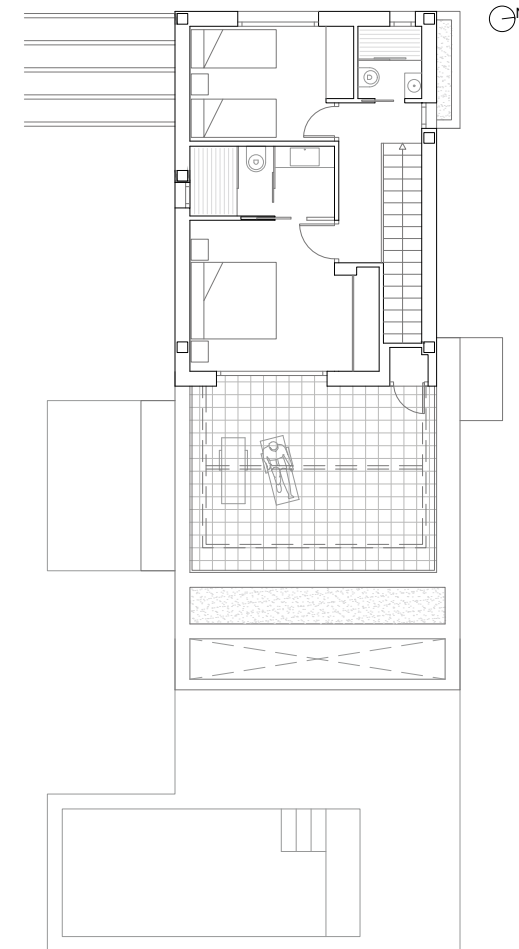
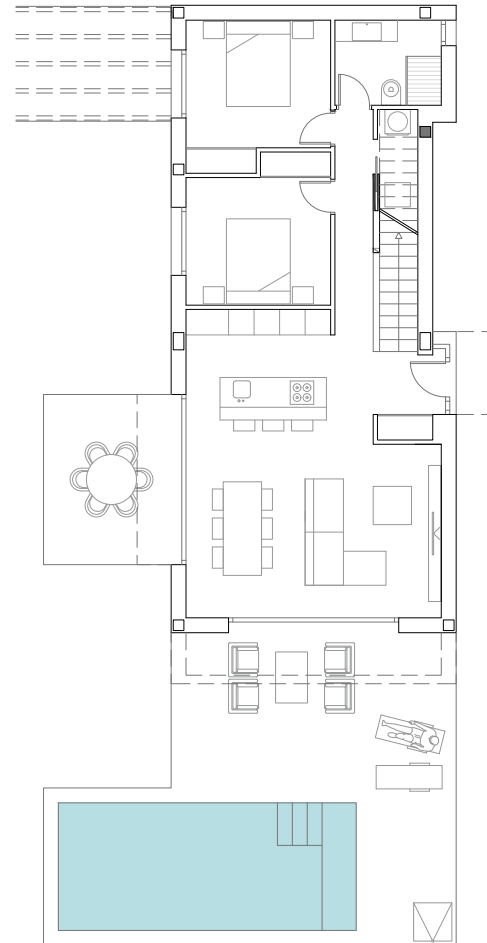
Villas by Geosem



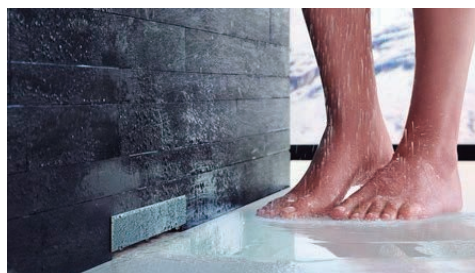
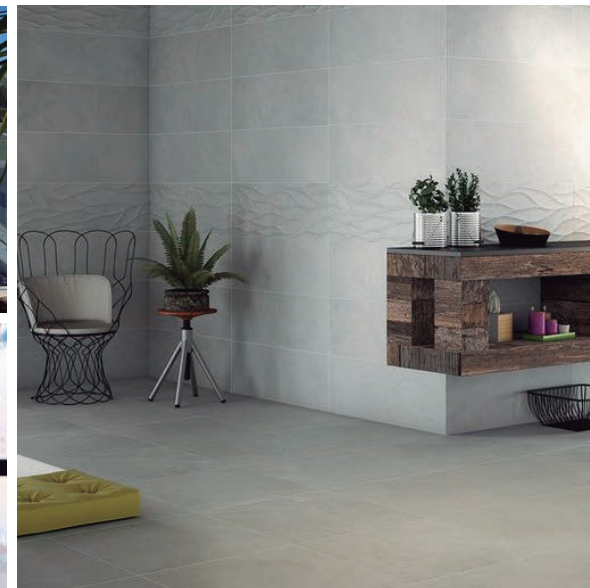
## Villa 2

### Main Floor

Plot:	500,00 m <sup>2</sup>
Ground floor:	95,70 m <sup>2</sup>
First Floor:	49,54 m <sup>2</sup>
Terraces:	53,00 m <sup>2</sup>
Solarium:	26,00 m <sup>2</sup>
Parking:	25,50 m <sup>2</sup>
Total:	249,74 m <sup>2</sup>
Pool:	21,00 m <sup>2</sup>



# Quality & Efficiency



# Cabo Azul

## Bungalows





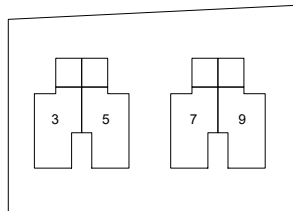
# Cabo Azul

## Bungalows

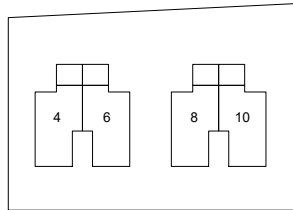


# Cabo Azul

## Bungalows



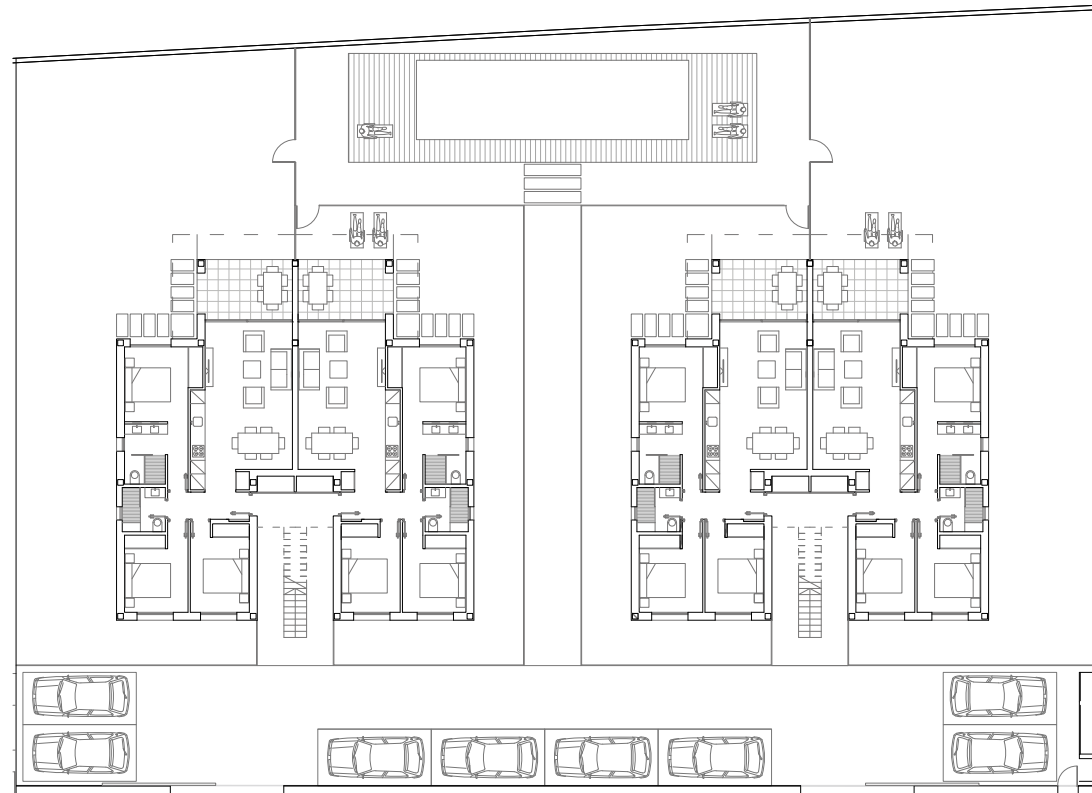
Ground Floor



First Floor

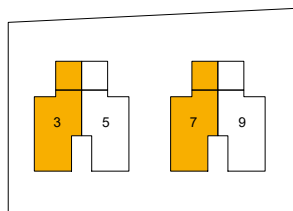
### Bungalows

- Plot: 1612,81 m<sup>2</sup>
- Gardens and paths: 230,14 m<sup>2</sup>
- Pool: 42,00 m<sup>2</sup>
- Parking: 254,63 m<sup>2</sup>

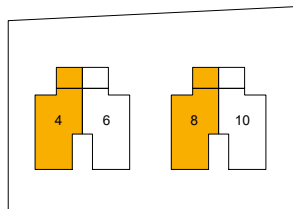


# Cabo Azul

## Bungalows



Ground Floor



First Floor

### Bungalows

#### Nº 3 and Nº 7

Built: 91,77 m<sup>2</sup>

Storage Room: 1,25 m<sup>2</sup>

Porch (50%): 15,14 m<sup>2</sup>

### Bungalows

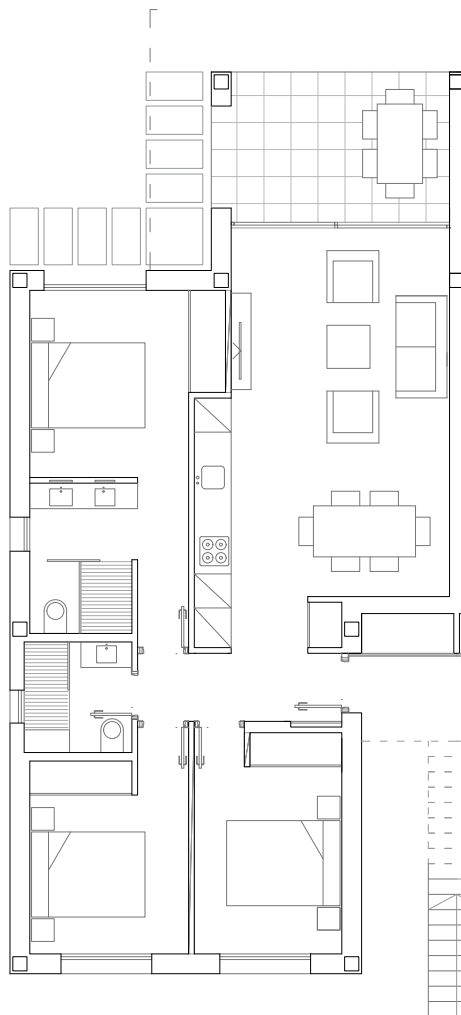
#### Nº 4 and Nº 8

Built: 91,77 m<sup>2</sup>

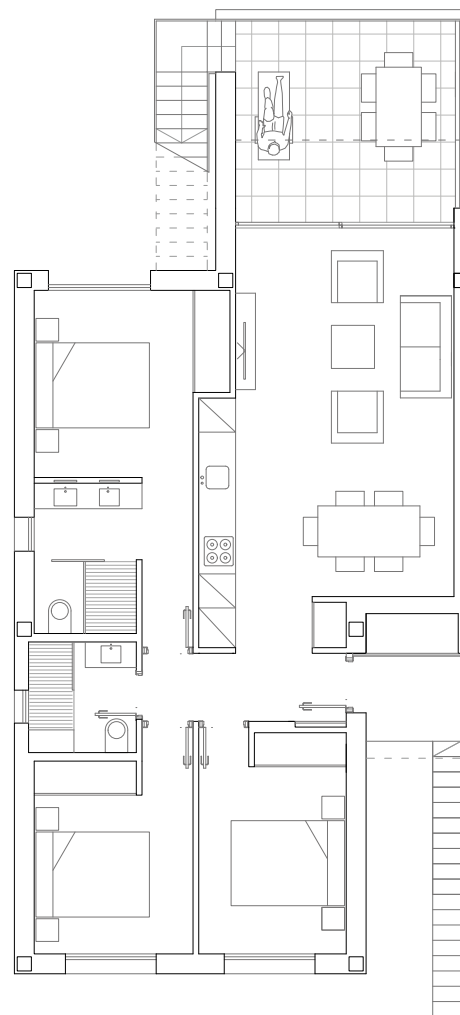
Storage Room: 1,25 m<sup>2</sup>

Terrace (50%): 4,77 m<sup>2</sup>

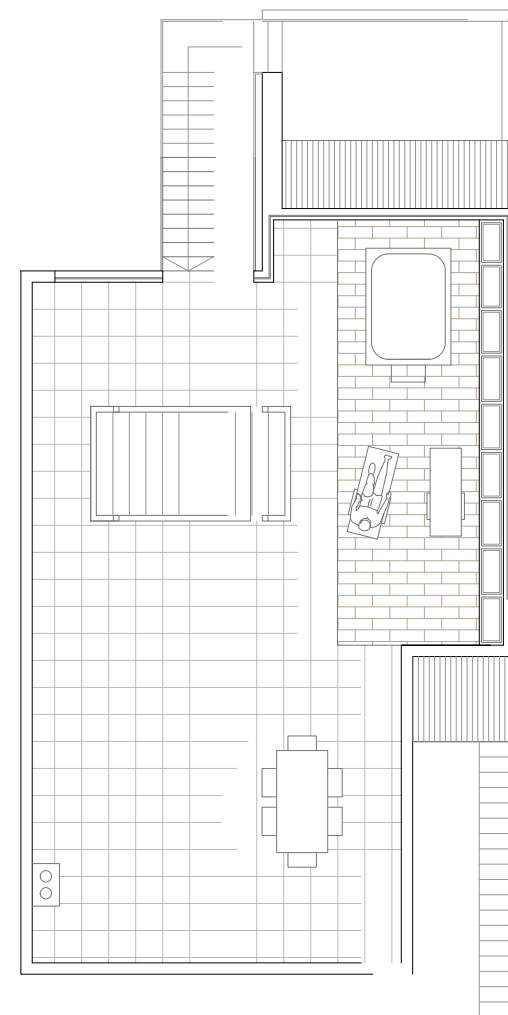
Solarium: 85,56 m<sup>2</sup>



BUNGALOWS Nº 3 AND Nº 7 GROUND FLOOR



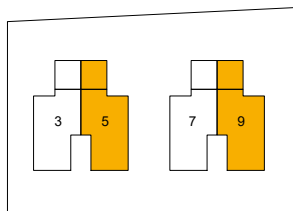
BUNGALOWS Nº 4 AND Nº 8 FIRST FLOOR



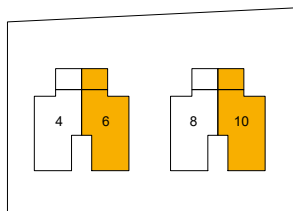
BUNGALOWS Nº 4 AND Nº 8 SOLARIUM

# Cabo Azul

## Bungalows



Ground Floor



First Floor

### Bungalows

#### Nº 5 and Nº 9

Built: 91,77 m<sup>2</sup>

Storage Room: 1,25 m<sup>2</sup>

Terrace (50%): 15,14 m<sup>2</sup>

### Bungalows

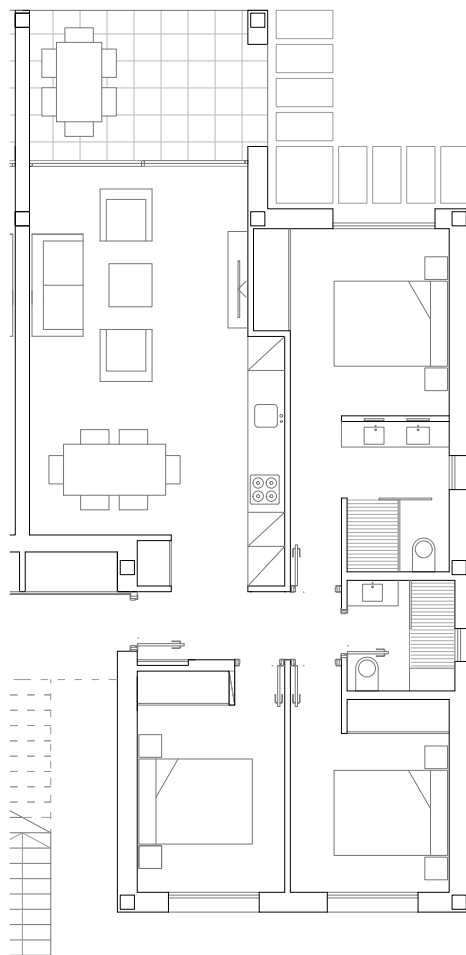
#### Nº 6 and Nº 10

Built: 91,77 m<sup>2</sup>

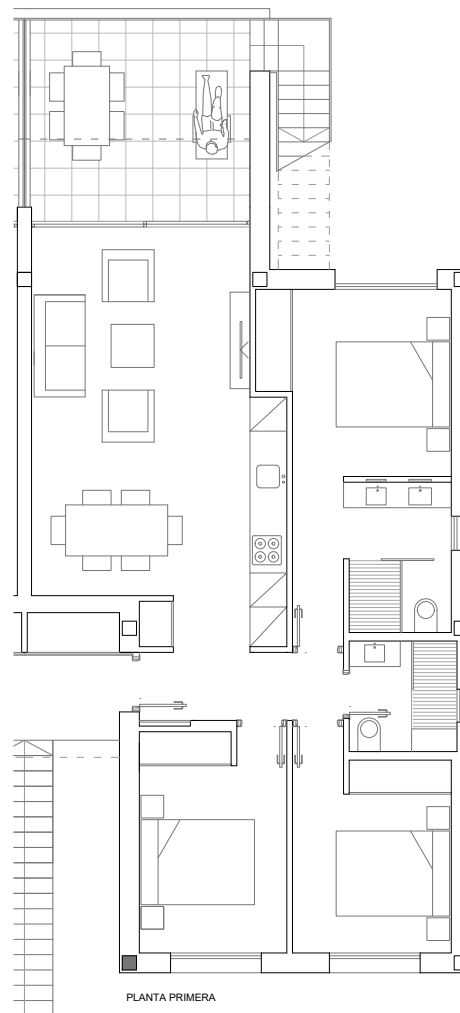
Storage Room: 1,25 m<sup>2</sup>

Terrace (50%): 4,77 m<sup>2</sup>

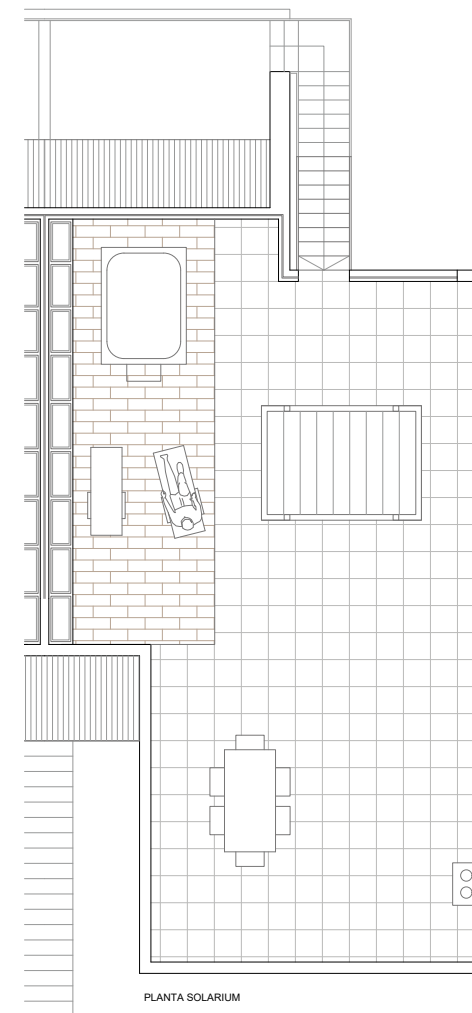
Solarium: 85,56 m<sup>2</sup>



BUNGALOWS Nº 5 AND Nº 9 GROUND FLOOR

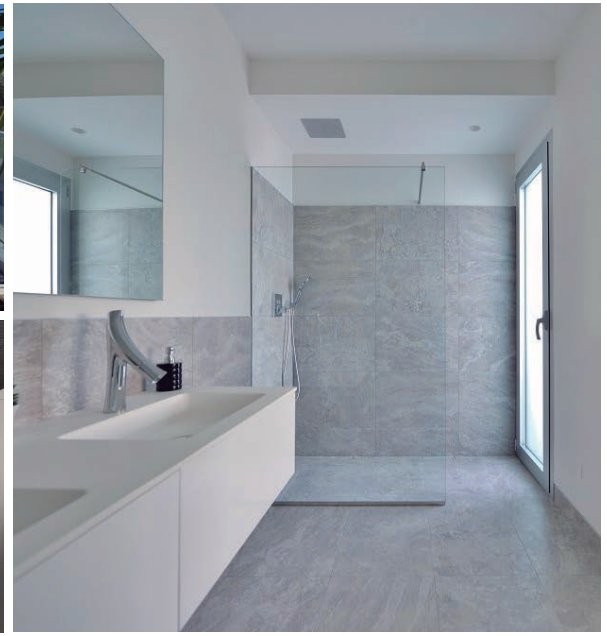
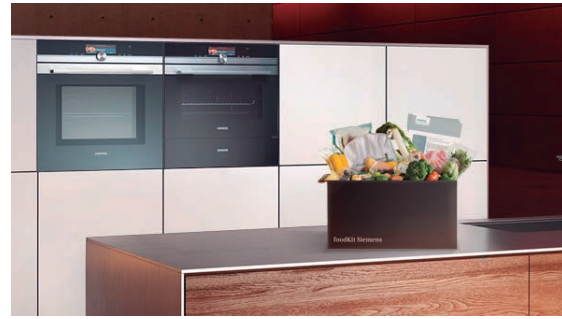


BUNGALOWS Nº 6 AND Nº 10 FIRST FLOOR



BUNGALOWS Nº 6 AND Nº 10 SOLARIUM

# Quality & Efficiency









*Building Quality Since 1.990*